

NIHAVEND ŞARKI

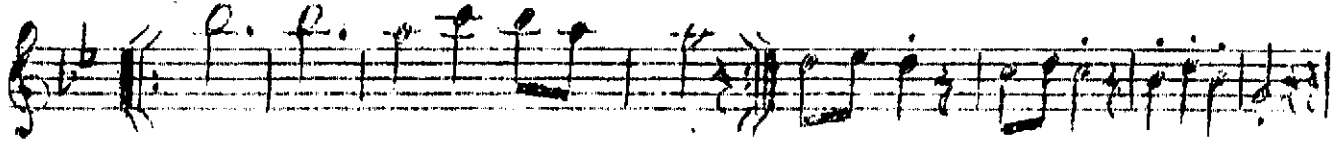
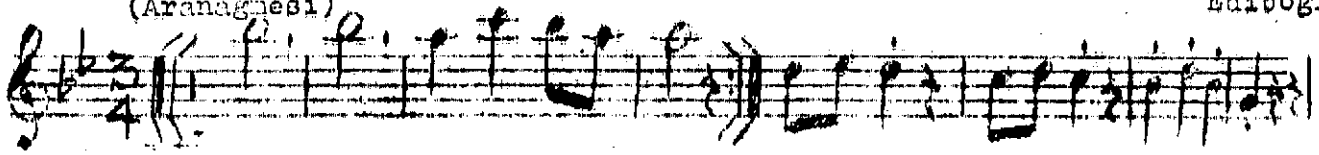
(Semâî-Düyek)

(Aranağnesi)

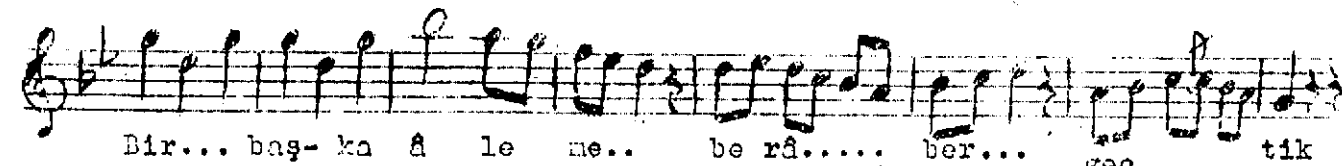
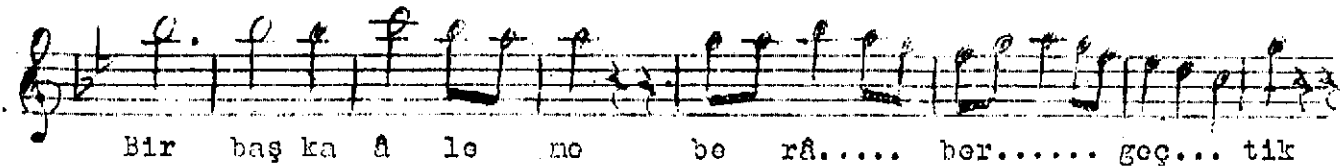
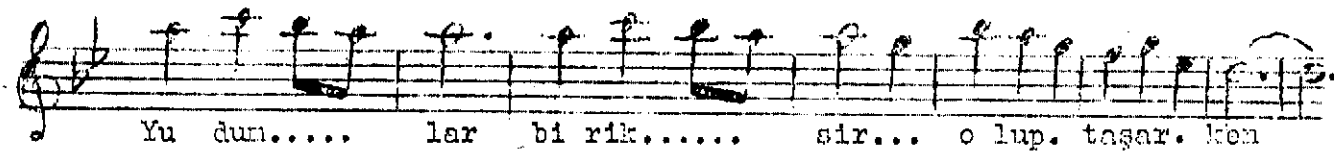
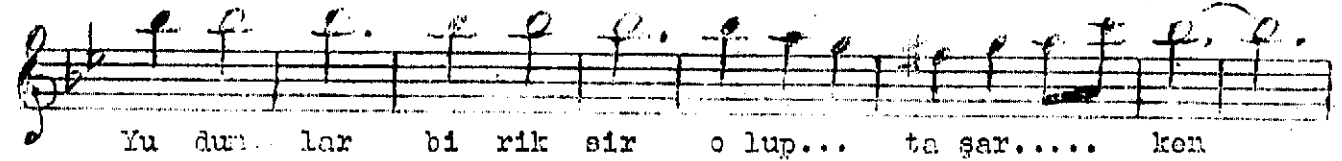
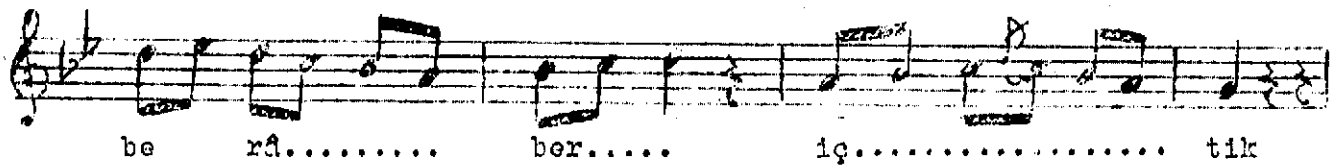
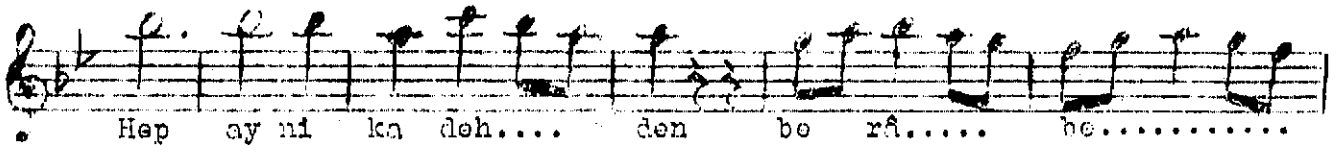
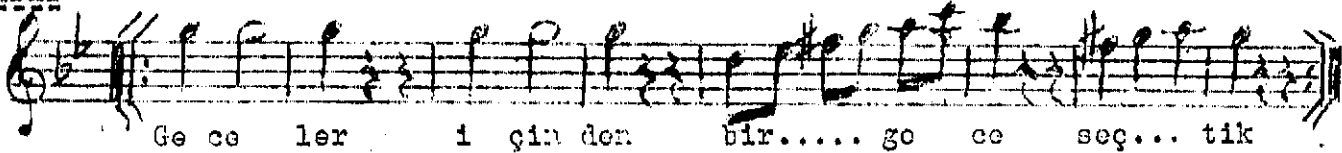
Beste: Avni Anıl

Güfte: Bakî Sühâ

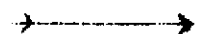
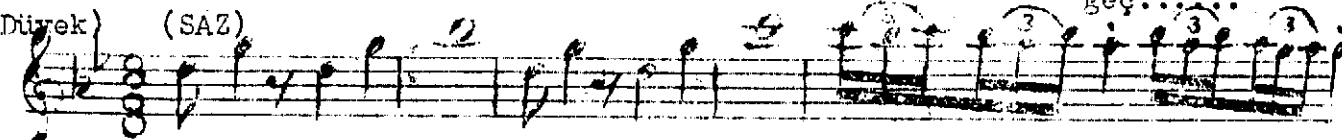
Ediboğlu

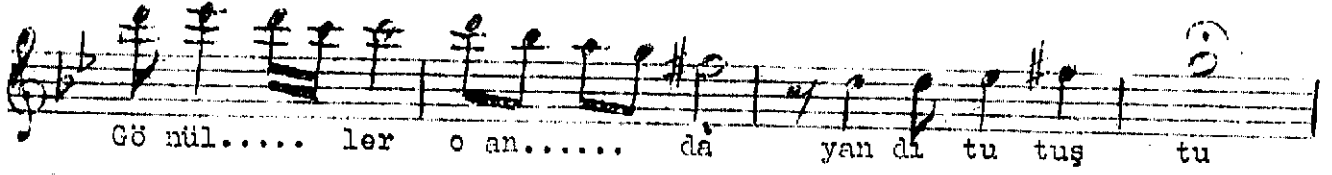
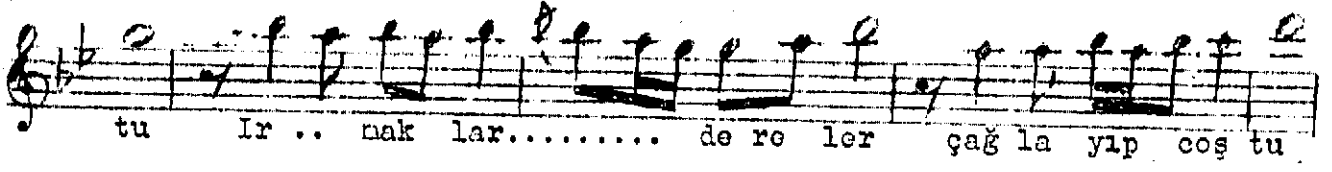


Şarkı

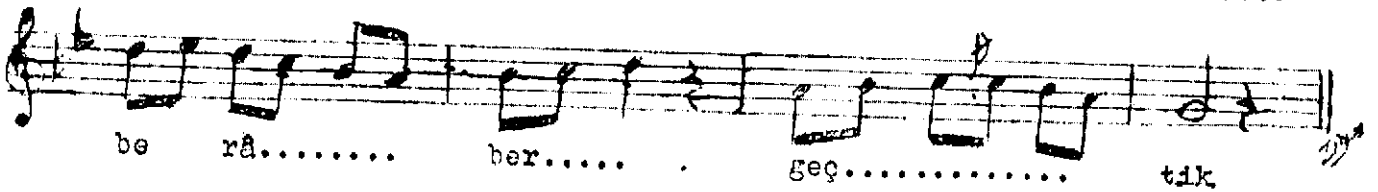
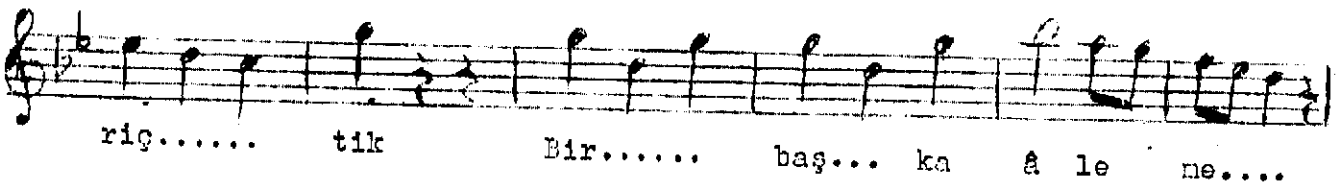
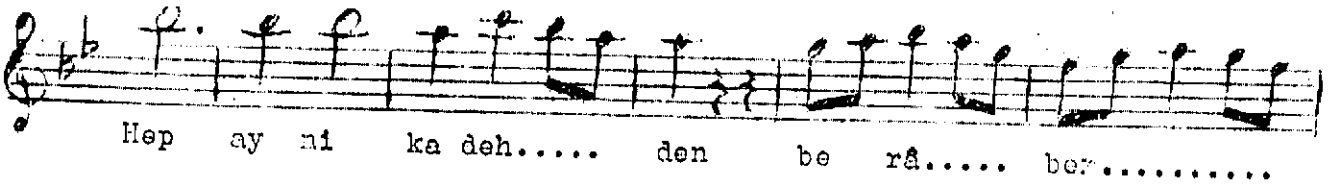
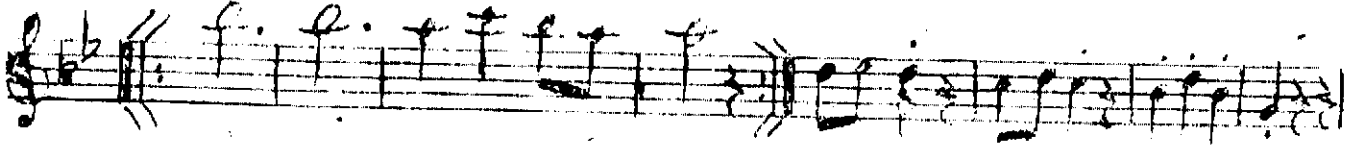
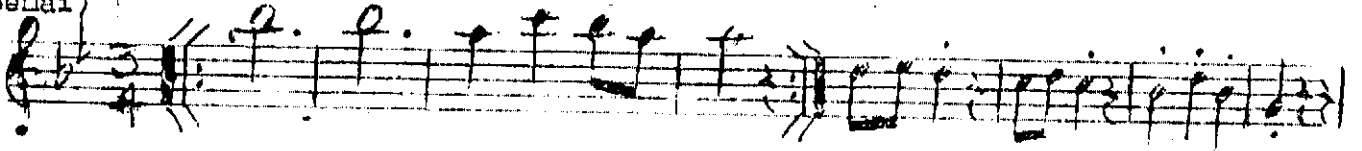


(Düyek) (SAZ)





Senâî)



Geceler içinden bir gece seçtik  
 Hep aynı kadehden berâber içtik  
 Yudunlar bir iksir olup taşarken  
 Bir başka âleme berâber geçtik

Şarkılar dallara konan bir kuştı  
 İrmaklar dereler çağlayıp coştı  
 Gönüller o anda yandı tutuştu

Geceler içinden bir gece seçtik  
 Hep aynı kadehden berâber içtik  
 Bir başka âleme berâber geçtik...